

iOS Application for NEC Projectors

Wireless Image Utility Operating Guide



NEC's Image

Contents

1. Description of the Wireless Image Utility	2
1-1. Features	2
1-2. Operating conditions	6
1-3. Flow of operations	6
2. Installing the Wireless Image Utility on an iPad	7
3. Transferring the files to be projected to the iPad via iTunes	7
4. Connecting the projector and iPad to the network	8
4-1. Connecting the projector to the network	8
4-2. Connecting the iPad to the same network as the projector	8
5. Operating the Wireless Image Utility	8
6. Appendix: Examples of settings for connecting the projector to the network	9
6-1. For the NP-P, NP-PA, NP-PX and NP-PH series	9
6-2. For the NP-P501/NP-P451 series and other supported models (utilizing the simple access point function)	11
6-3. For the NP-M series and NP-UM series	13
6-4. Connecting the projector to a commercially available wireless LAN router	16

1. Description of the Wireless Image Utility

1-1. Features

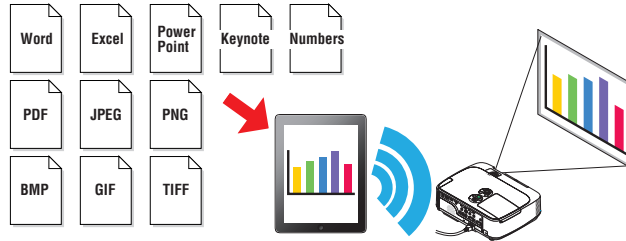
The Wireless Image Utility is an application for iOS

It can be used with an iPad, iPhone or iPod touch. The explanations in this guide describe use with an iPad as an example.

Wireless transfer of files stored on the iPad to the projector

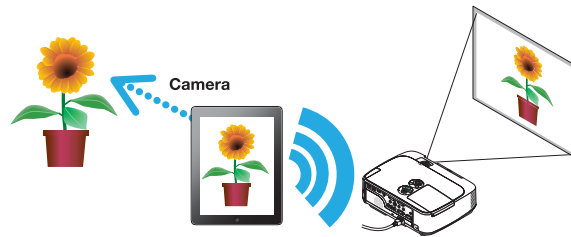
Images and text stored in the Wireless Image Utility on the iPad using iTunes can be sent to the projector and projected on the screen.

* Photos in iPad albums can also be used.



Real-time transfer of images being filmed with the iPad's internal camera to the projector

Images being filmed with the iPad's internal camera can be sent in real time to the projector and projected on the screen.



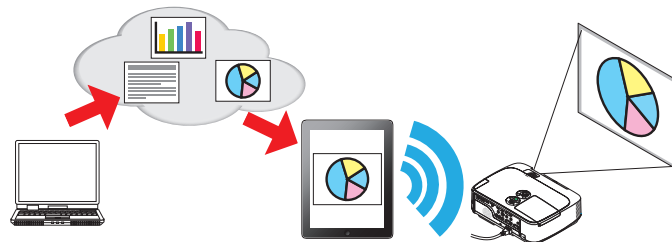
Wireless transfer to the projector of web pages searched for on the iPad

Web pages can be searched for and displayed in the Wireless Image Utility. The pages can be sent to the projector wirelessly and projected on the screen.



Cloud files can be projected with the projector in combination with a file sharing application

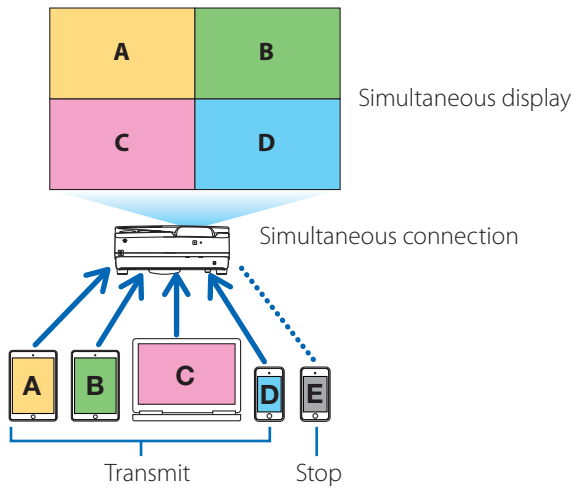
By using in combination with Dropbox, GoodReader or another file sharing application, files in the cloud can be projected with the projector.



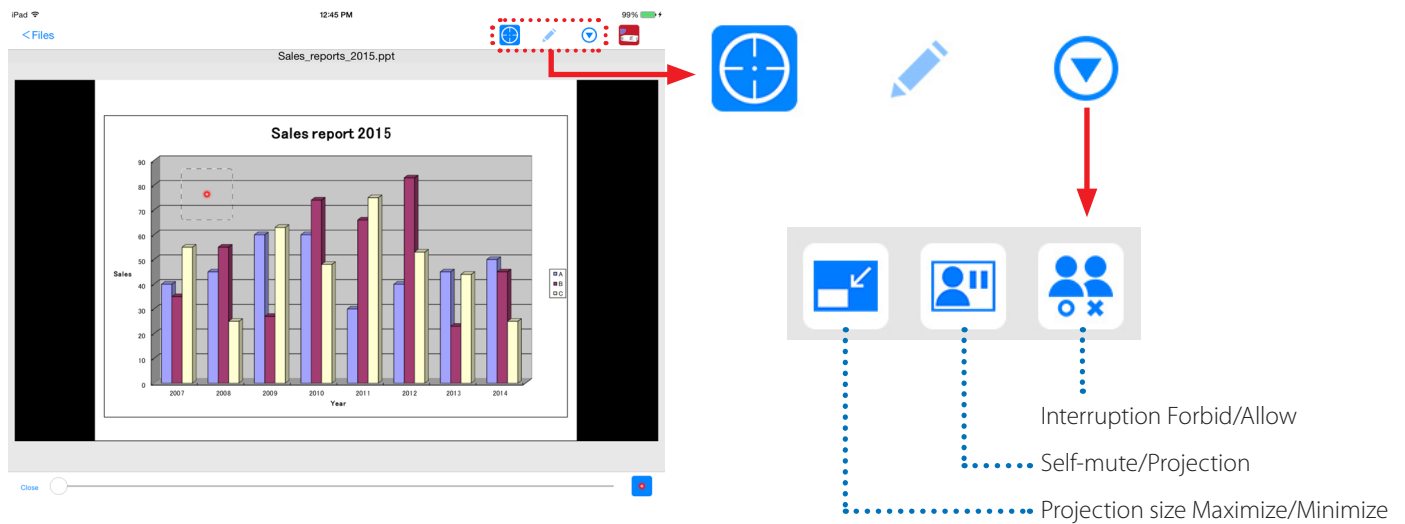
Supports the IMAGE EXPRESS UTILITY receiving function equipped on the latest projector.

The functions of simultaneous connection, simultaneous display with multiple numbers of smart phones and computers are provided as the IMAGE EXPRESS UTILITY receiving function. The MANAGED mode is also provided.

The latest Wireless Image Utility supports this function.



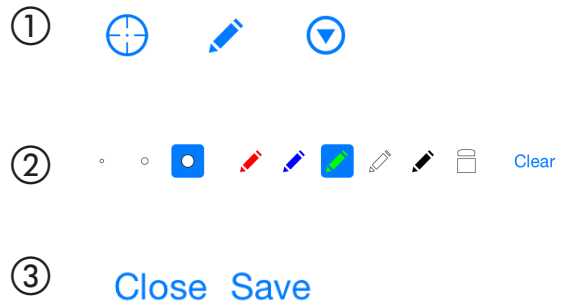
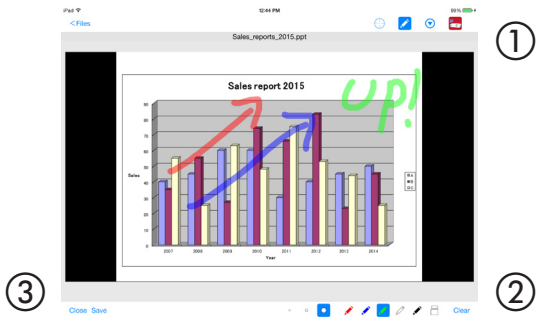
Operation during the simultaneous display



Marker function, pointer display and zoom in/out operations for effective presentations

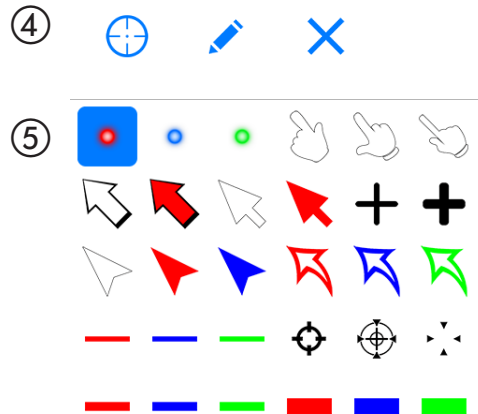
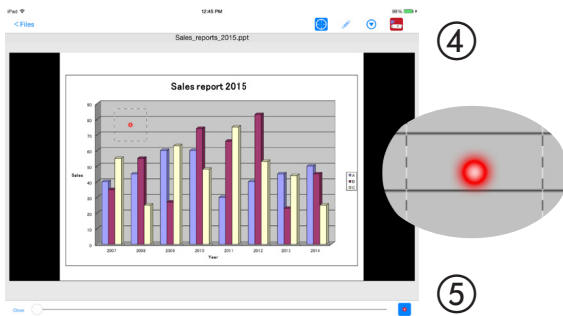
Marker function

The marker function can be used to write lines, words, etc. on images or documents displayed with the Wireless Image Utility. The images or documents onto which lines, words, etc., have been written can be saved as images and reused for presentations.



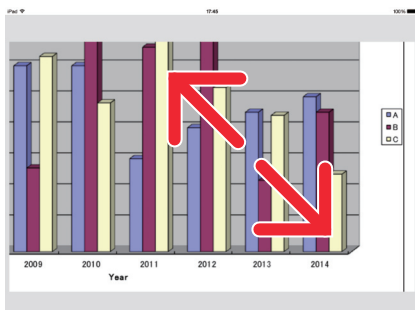
Pointer display

Pointers can be used to indicate sections you want to call attention to. A number of different pointer shapes can be selected, and the size of the pointer can be changed by moving the slider along the bottom of the screen.



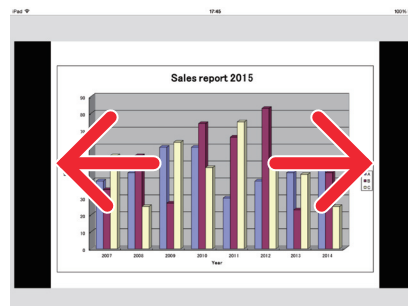
Zooming in/out

The screen can be zoomed in and out by pinching in or pinching out.



Switching pages

Pages can be switched by flicking.



Pointer display using the three-axis gyroscope

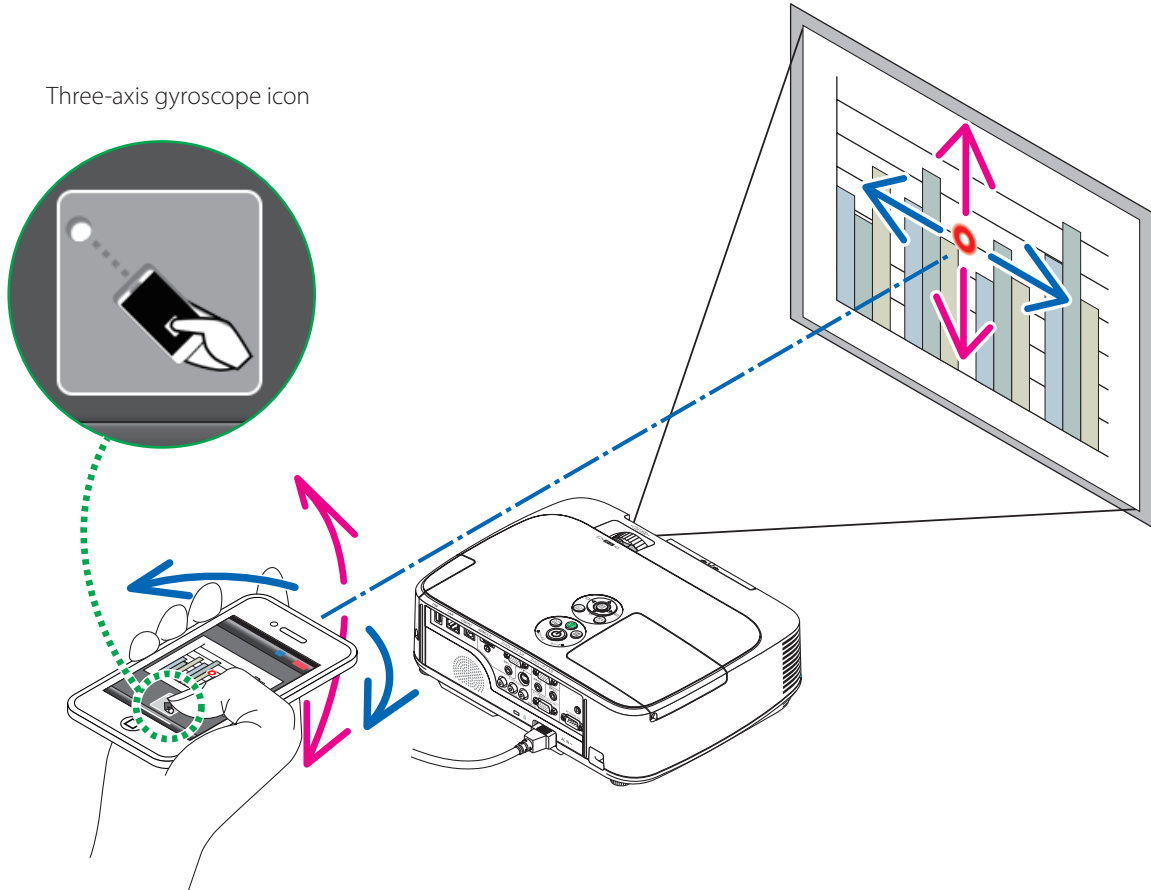
When using an iPhone or iPod touch, the pointer can be moved using the three-axis gyroscope.

This is not possible with an iPad.

When the pointer display screen^{(*)1} is displayed with the Wireless Image Utility and the iPhone or iPod touch is moved while pressing the three-axis gyroscope icon at the bottom of the screen, the pointer on the screen^{(*)2} moves together with the movement of the iPhone or iPod touch.

*¹ The pointer display using the three-axis gyroscope can only be used in portrait (upright) view.

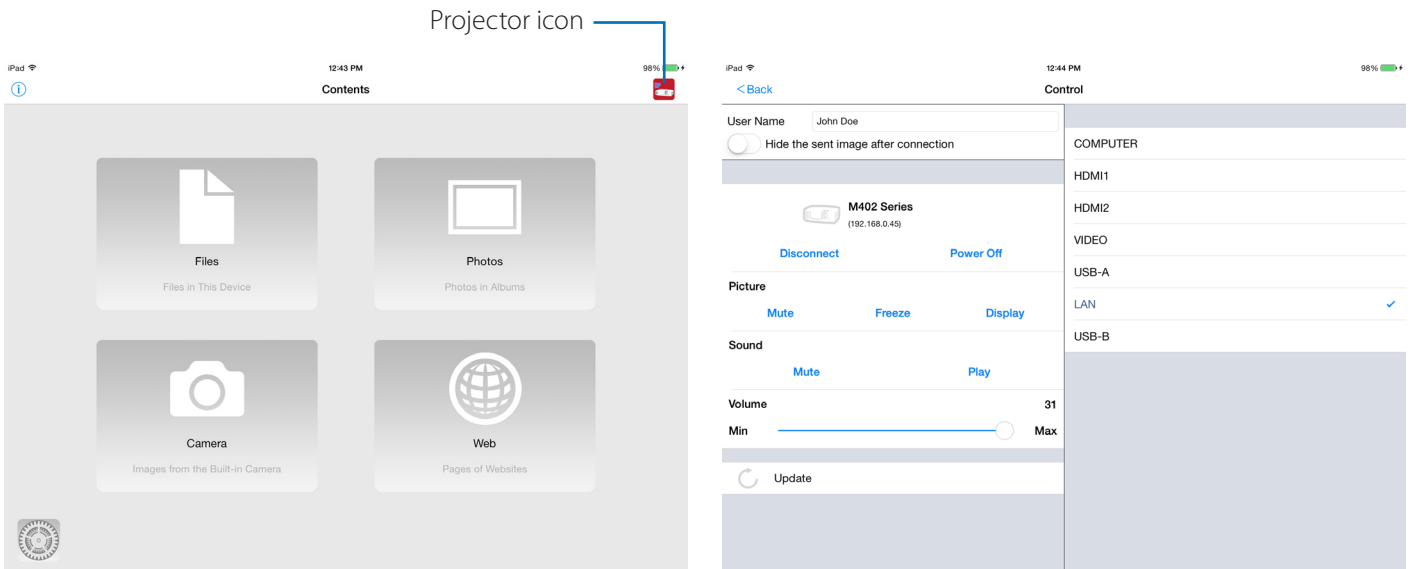
*² When the three-axis gyroscope icon is pressed, the pointer is displayed at the center of the screen.



Projector control function

When an iPad or iPhone is connected to the projector by wireless LAN and the projector icon in the upper right of the screen is tapped, the projector control screen appears.

Such operations as turning off the projector's power, switching the input terminal, adjusting the volume and cutting off communications with the projector can be performed from this screen.



Supplemental information

The types of data below can be sent from the Wireless Image Utility to the projector.

Images files	JPEG format (.jpg/jpeg), PNG format (.png), GIF format (.gif), TIFF format (.tiff), Bitmap format (.bmp)
Microsoft Office files	Word (.doc/.docx: Office 2003 or later), Excel (.xls/.xlsx: Office 2003 or later), PowerPoint (.ppt/.pptx: Office 2003 or later)
Apple iWork files	Keynote (.key), Numbers (.numbers)
PDF files	Adobe Acrobat (.pdf: PDF1.7 [Acrobat 8 compatibility])

NOTE

- The Wireless Image Utility uses a simplified display, so images may appear different from when they are displayed with applications for a computer. Before using images for presentations, check how they are displayed with the Wireless Image Utility.
- Files with passwords cannot be displayed.
- When image files that contain animations are displayed, the first image is displayed as a still picture.
- Word, Excel and Numbers files are displayed as vertically joined images (like a paper roll).
- If PowerPoint or Keynote files do not switch pages properly, you may need to change the page settings.

1-2. Operating conditions

For the latest information, see the Wireless Image Utility's website.

Supported operating systems	iOS 5.0 or later
Supported models	iPod touch, iPhone or iPad on which a supported operating system is running
Supported projectors	NP-M series, NP-UM series, NP-P series, NP-PA series, NP-PX series, NP-PH series
Wireless LAN	Mount a wireless LAN unit on the projector. Depending on the projector, the wireless LAN unit may be built-in or sold separately. If the projector does not have a built-in wireless LAN unit, purchase the separately sold wireless LAN unit*. If you cannot purchase the wireless LAN unit, it is also possible to connect one of the above projectors to a commercially available wireless LAN router by LAN cable. (→ page 16) * Usable wireless LAN unit is differed depending on the projector model. Please visit our web site for finding an appropriate wireless LAN unit.

1-3. Flow of operations

The Wireless Image Utility settings and operations are performed in the following step.

- (1) Installing the Wireless Image Utility on an iPad
↓
- (2) Transferring the files to be projected to the iPad via iTunes
↓
- (3) Connecting the projector to the network
↓
- (4) Connecting the iPad to the same network as the projector
↓
- (5) Operating the Wireless Image Utility

2. Installing the Wireless Image Utility on an iPad

Search for “Wireless Image Utility” on the App Store and install it.

- The Wireless Image Utility is a free application.
- On the iPad’s home screen, the Wireless Image Utility is displayed as an icon named “NEC’s Image”.



3. Transferring the files to be projected to the iPad via iTunes

Transfer and save the image and text files to be sent from the Wireless Image Utility to the projector from iTunes onto the iPad.

- [1] **Connect the iPad and computer by USB cable.**
iTunes is launched and synchronization starts.
- [2] **Once synchronization is completed, operate iTunes as described below.**



- ① Click the iPad.
 - ② Click “Apps”.
 - ③ In the “File Sharing” field, click “NEC’s Image”.
 - ④ Drag and drop the files to the “NEC’s Image Documents” field.
 - ⑤ Click “Sync” or “Apply”.
- Synchronization starts and the files are transferred to the iPad.

- [3] **Once synchronization is completed, disconnect the iPad from the computer.**

4. Connecting the projector and iPad to the network

4-1. Connecting the projector to the network

- [1] Display the projector's on-screen menu and make the settings at "NETWORK INFORMATION".

For detailed instructions, see "6. Appendix: Examples of settings for connecting the projector to the network" (→ page 9).

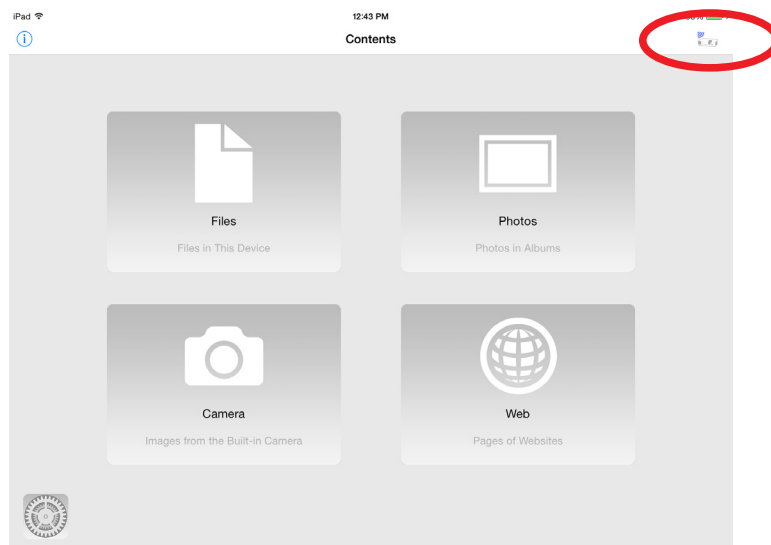
4-2. Connecting the iPad to the same network as the projector

- [1] On the iPad's home screen, tap the "Settings" icon.
- [2] Tap "Wi-Fi".
- [3] Switch "Wi-Fi" to "On".
The list of networks is displayed.
- [4] Tap the SSID selected in the projector's network settings.
- [5] If the SSID you want to connect to is encrypted by WEP, etc., input the encryption key.
- [6] Press the home button to return to the home screen.

5. Operating the Wireless Image Utility

- [1] On the iPad's home screen, tap the "NEC's Image" icon.

The Contents screen is displayed.



- [2] Tap the projector icon at the upper right of the Contents screen.

A list of NEC projectors on the network is displayed.

- [3] Tap the projector to which you want to connect.

Once the projector is connected to, the Contents screen reappears.

- It is also possible to connect to the projector by tapping "IP Address" at the upper right of the projector selection screen and inputting the IP address.

- [4] Tap the desired contents on the Contents screen.

The selected image or text is displayed on the iPad's screen, then projected from the projector.

6. Appendix: Examples of settings for connecting the projector to the network

Check that the wireless LAN unit is mounted on the projector.

The network settings procedure differs according to the projector model (series).

Also, if you cannot purchase the wireless LAN unit, it is possible to connect the projector to a commercially available wireless LAN router by LAN cable (→ page 16).

6-1. For the NP-P, NP-PA, NP-PX and NP-PH series

With the NP-P, NP-PA, NP-PX and NP-PH series, the network settings can be made on the projector itself.

* Besides the above models, the network settings can be also made on the projector itself equipped with the APPS menu.

Operations on the projector

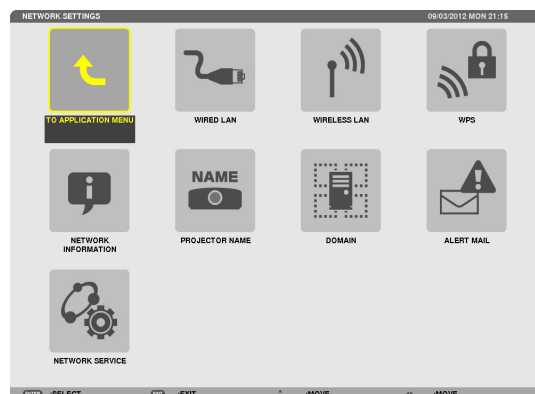
Here we describe the procedure using the P420X as an example.

- [1] Turn on the projector's power.
- [2] Press the NETWORK button on the remote control.

The application menu is displayed.



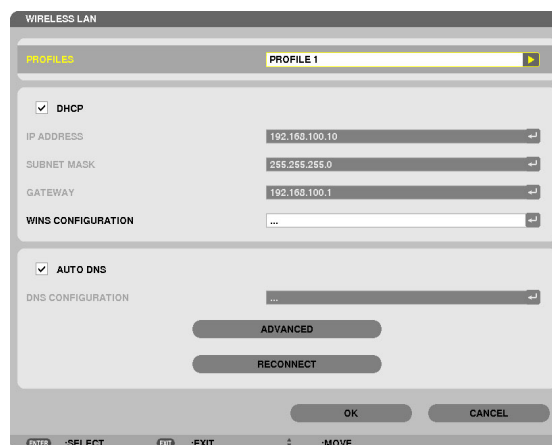
- [3] Set the cursor to [NETWORK SETTINGS], then press the ENTER button.



- [4] Set the cursor to [WIRELESS LAN], then press the ENTER button.
- [5] Set the cursor to the [PROFILES] field, press the ENTER button, then set the cursor to [PROFILE 1] or [PROFILE 2] and press the ENTER button again.

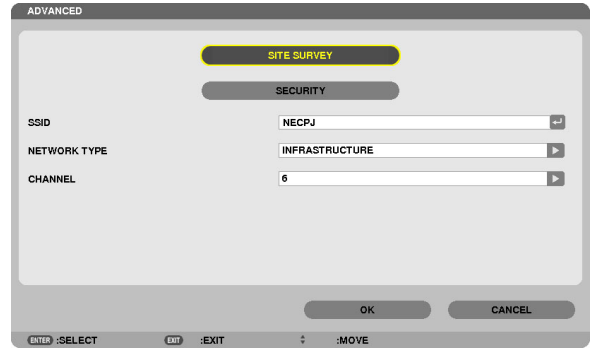
- [6] Set the cursor to [OK], then press the ENTER button.

The wireless LAN unit turns on and the network settings menu reappears.



- [7] Set the cursor to [WIRELESS LAN] again, then press the ENTER button.
- [8] Set the cursor to [ADVANCED], then press the ENTER button.

[9] Set the cursor to [SITE SURVEY], then press the ENTER button.



[10] Select the SSID to which you want to connect, then press the ENTER button.

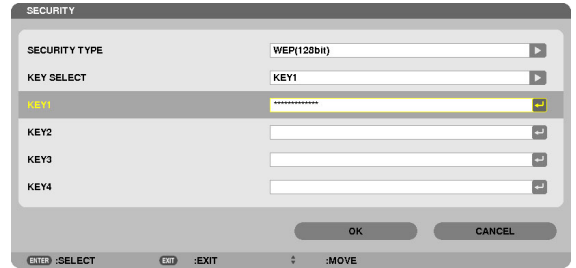
If the SSID you want to connect to is encrypted by WEP, etc., the [SECURITY] screen appears.

NOTE

- Ask your network administrator what SSIDs you can connect to.

[11] Make the necessary settings, then set the cursor to [OK] and press the ENTER button.

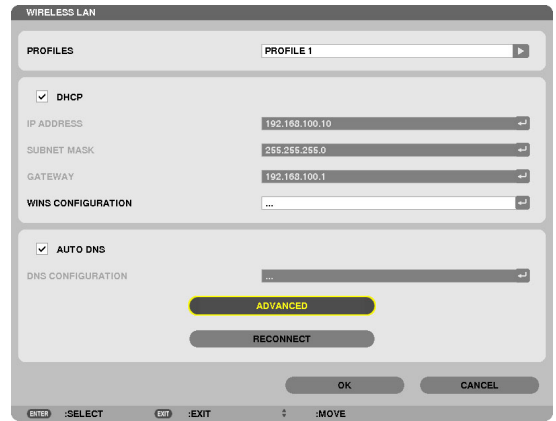
The advanced settings screen reappears.



[12] Set the cursor to [OK], then press the ENTER button.

The wireless LAN screen reappears.

[13] Set the cursor to [RECONNECT], then press the ENTER button.

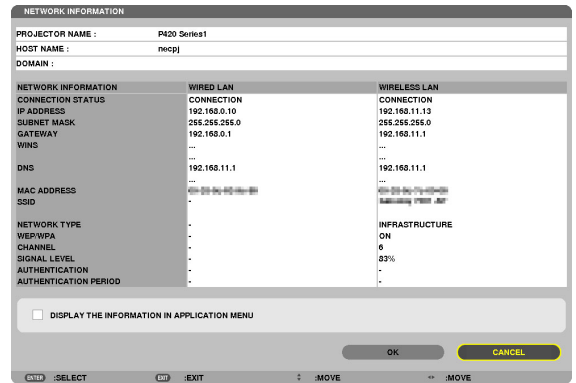


[14] Set the cursor to [OK], then press the ENTER button.

The network settings screen reappears.

[15] Set the cursor to [NETWORK INFORMATION], then press the ENTER button.

On the network information screen, check that you are connected to the network.



[16] Check that the cursor is set to [CANCEL], then press the ENTER button.

The network settings screen reappears.

This completes the network settings.

6-2. For the NP-P501/NP-P451 series and other supported models (utilizing the simple access point function)

With the NP-P501/NP-P451 series and other supported models in the environment of no access point, the simple access point function can be utilized for connecting the projector and iPad in a network.

Operations on the projector

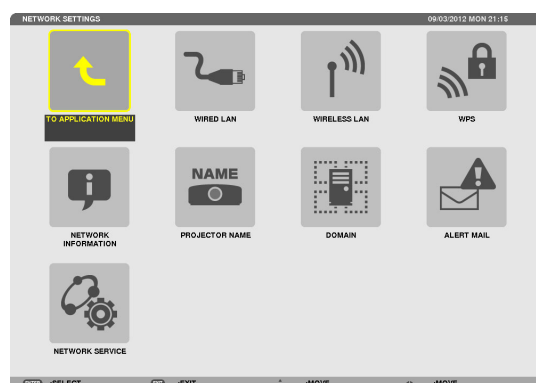
Here we describe operations on the NP-P501X as an example.

- [1] Turn on the projector's power.
- [2] Press the NETWORK button on the remote control.

The APPLICATION MENU appears.



- [3] Set the cursor to [NETWORK SETTINGS], then press the ENTER button.

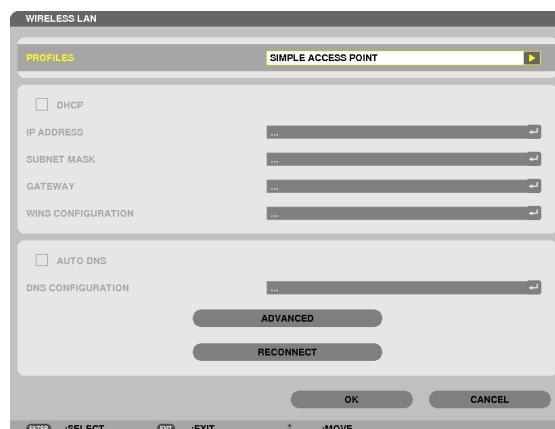


- [4] Set the cursor to [WIRELESS LAN], then press the ENTER button.

- [5] Set the cursor to the [PROFILES] field, press the ENTER button, then set the cursor to [SIMPLE ACCESS POINT] and press the ENTER button.

- [6] Set the cursor to [ADVANCED], then press the ENTER button.

The ADVANCED screen appears.



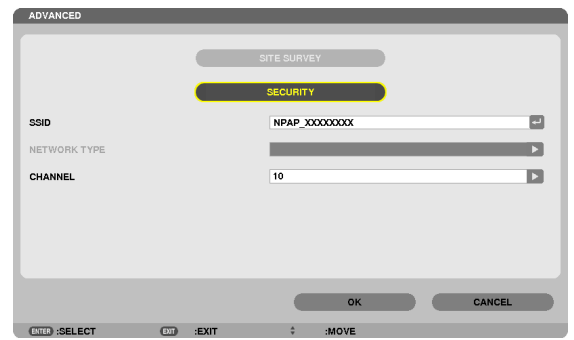
[7] Check the name in the SSID field.

“NPAP_XXXXXXXX” is displayed in the SSID field (“XXXXXXXX” differs from product to product).

- This can be changed to a name that is easier to remember.

IMPORTANT

- The SSID will be selected later when making the Wi-Fi settings on the iPad, so remember the SSID name displayed here.



[8] Set the cursor to [OK], then press the ENTER button.

The WIRELESS LAN settings screen reappears.

[9] Set the cursor to [RECONNECT], then press the ENTER button.

[10] Set the cursor to [OK], then press the ENTER button.

The NETWORK SETTINGS screen reappears.

This completes the network settings.

6-3. For the NP-M series and NP-UM series

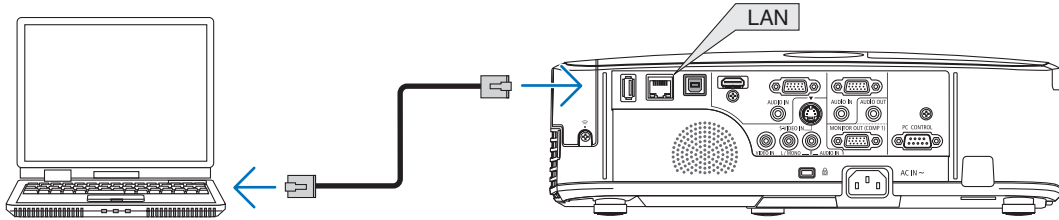
To make the network settings for the NP-M series and NP-UM series*, connect the projector and computer by LAN cable and display the projector's HTTP server screen on the computer.

* Except the projector equipped with the APPS menu.

Operations on the projector

Here we describe the procedure using the M350X as an example.

- [1] **Connect the projector and computer by LAN cable.**



- [2] **Turn on the projector's power.**
[3] **Press the MENU button on the remote control.**

The on-screen menu appears.

- [4] **Select the [SETUP] tab, then the-[WIRED LAN] tab.**

Check that [WIRED LAN] is set to [ENABLE].

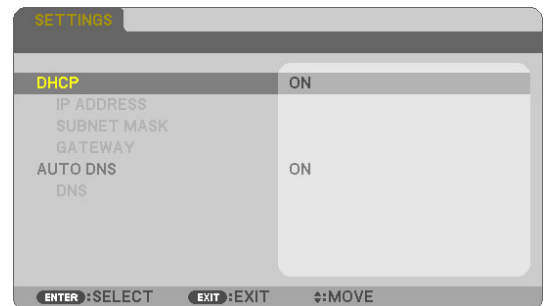
If it is set to [DISABLE], press the ENTER button to switch it to [ENABLE].



- [5] **Set the cursor to [SETTINGS], then press the ENTER button.**

- [6] **Set the cursor to [DHCP], then press the ENTER button.**

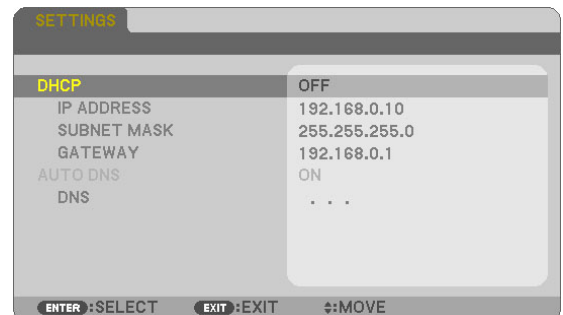
- [7] **Set the cursor to [OFF], then press the ENTER button.**



- [8] **Make a note of the IP address, subnet mask and gateway settings.**

For this example, we use the values below.

- IP address: 192.168.0.10
- Subnet mask: 255.255.255.0
- Gateway: 192.168.0.1



- [9] **Press the EXIT button.**

The connection confirmation screen appears.

- [10] **Set the cursor to [YES], then press the ENTER button.**

The wired LAN screen reappears.

Operations on the computer

- [11] Open the computer's network settings screen and set the wired LAN settings as follows:

- IP address: 192.168.0.11
- Subnet mask: 255.255.255.0
- Gateway: 192.168.0.1

NOTE

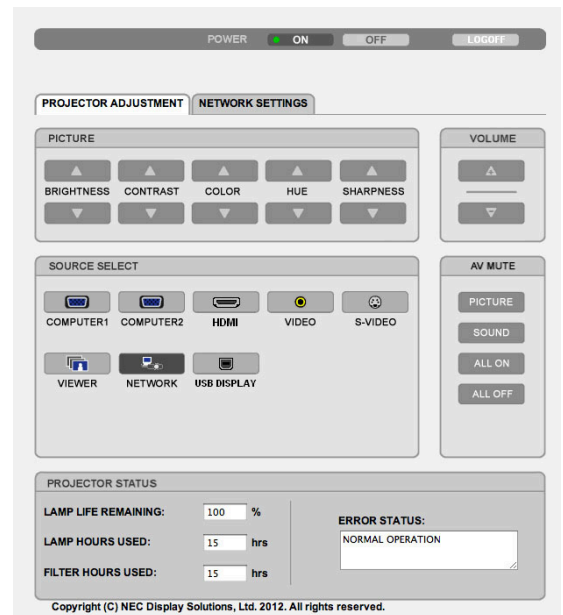
- Set the computer's IP address to a different value from the projector's IP address.
- Be sure to make a note of the network settings values (IP address, subnet mask and gateway) that were previously set on the computer.

- [12] Launch an Internet browser on the computer.

- [13] In the browser's URL field, input "http:// 192.168.0.10/index.html", then press the Enter key.

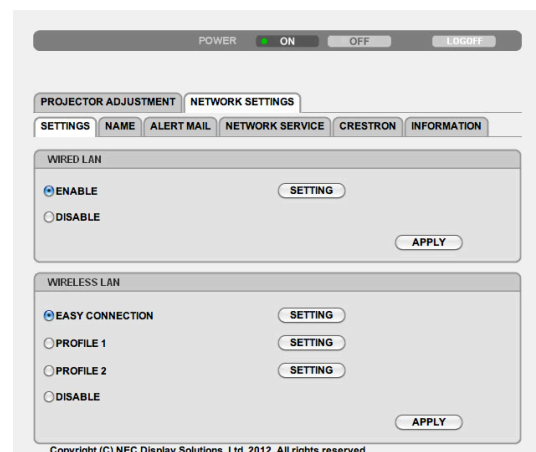
The projector's HTTP server screen appears.

- The HTTP server screen is in English.



- [14] Click the [NETWORK SETTINGS] tab.

- [15] Click [PROFILE 1] under [WIRELESS LAN], then click [SETTING] on its right.



[16] Click the [CONNECTION] tab.

[17] Click [SITE SURVEY].

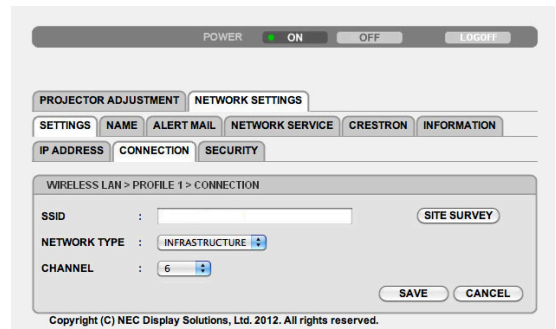
The list of SSIDs is displayed.

[18] Select the SSID to which you want to connect, then click [OK].

NOTE

- Ask your network administrator what SSIDs you can connect to.

The CONNECTION screen reappears.



[19] Click [SAVE].

If the selected SSID is encrypted, make the security settings.

[20] Click the [SECURITY] tab.

[21] Click [SECURITY TYPE] and select the appropriate type.

[22] Input the encryption key in the [KEY] field.

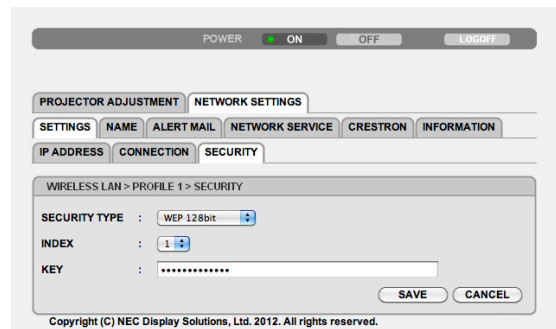
[23] Click [SAVE].

[24] Click the [NETWORK SETTINGS] tab.

[25] Click [APPLY] at [WIRELESS LAN].

[26] Check the message, then click [OK].

[27] Close the browser window.



Operations on the projector

[28] Press the MENU button on the remote control.

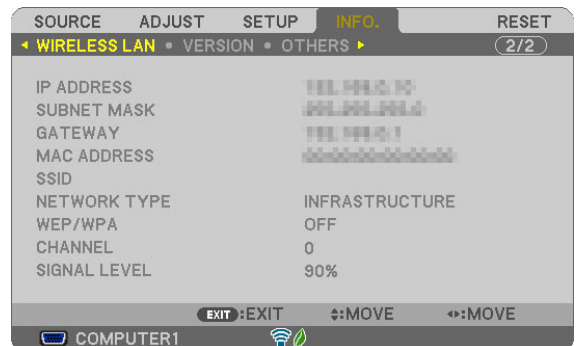
[29] Select the [INFO.] tab, then the [WIRELESS LAN] tab.

Check that the SSID is the one you have selected and that WEP/WPA is on or off as necessary.

[30] Press the MENU button.

The on-screen menu turns off.

[31] Disconnect the LAN cable connecting the computer and projector.



Operations on the computer

[32] Set the network settings you changed at step [11] on page 14 back to as they were originally.

This completes the network settings.

6-4. Connecting the projector to a commercially available wireless LAN router

Here we describe the procedure using the NP-M series as an example. The NP-UM, NP-P, NP-PA, NP-PX and NP-PH series can also be connected to a wireless LAN router.

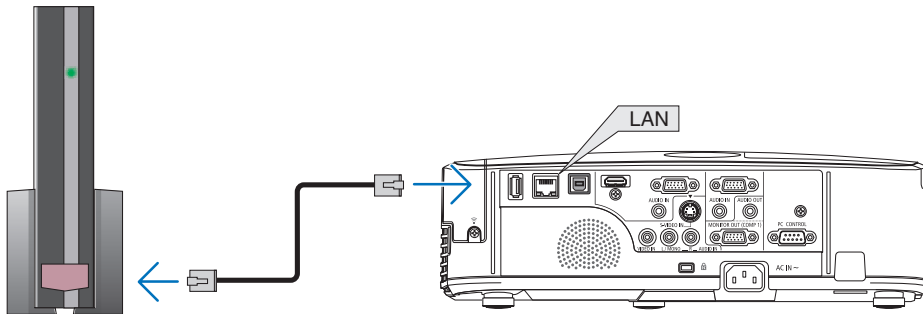
Operations on the wireless LAN router

First make the network settings on the wireless LAN router.

For the setting procedure, see the wireless LAN router's operating instructions.

Operations on the projector

- [1] Connect the projector and wireless LAN router by LAN cable.



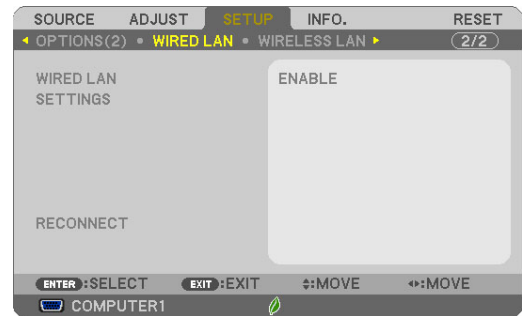
- [2] Turn on the projector's power.
[3] Press the MENU button on the remote control.

The on-screen menu appears.

- [4] Select the [SETUP] tab, then the [WIRED LAN] tab.

- [5] Check that [WIRED LAN] is set to [ENABLE].

If it is set to [DISABLE], press the ENTER button to switch it to [ENABLE].



- [6] Set the cursor to [SETTINGS], then press the ENTER button.

- [7] Check that [DHCP] is set to [ON].

If it is set to [OFF], press the ENTER button to switch it to [ON].

- [8] Press the EXIT button.

The "WIRED LAN" screen reappears.



- [9] Set the cursor to [RECONNECT], then press the ENTER button.

- [10] Press the MENU button.

The on-screen menu turns off.



This completes the network settings.

Trademarks

- Apple, Mac, Mac OS, MacBook, and iMac are trademarks of Apple Inc. registered in the U.S. and other countries.
- App Store is a service mark of Apple Inc.
- iOS is a trademark or registered trademark of Cisco in the U.S. and other countries and is used under license.
- Microsoft, Excel, PowerPoint are registered trademarks or trademarks of the Microsoft Corporation of the United States, in the United States and other countries.
- Google and Google Search are registered trademarks or trademarks of Google Inc.
- Twitter is a registered trademark or trademark of Twitter, Inc.
- Adobe and Acrobat are trademarks of Adobe Systems Incorporated.
- Wi-Fi®, Wi-Fi Alliance® and Wi-Fi Protected Access (WPA and WPA2)® are registered trademarks of the Wi-Fi Alliance.
- Dropbox is a registered trademark or trademark of Dropbox, Inc. of the United States.
- GoodReader is a registered trademark or trademark of Mr. Yuri Selukoff.
- Other names of manufacturers or products included in these operating instructions are registered trademarks or trademarks of the respective companies.

NOTE

- (1) Reproduction of the contents of these instructions, in whole or in part, is prohibited.
- (2) The contents of these instructions are subject to change without notice.
- (3) Utmost care has been taken in preparing these instructions. However if you should notice any doubtful contents, mistakes, omissions, etc., please contact NEC Display Solutions.
- (4) Please note that NEC Display Solutions will accept no responsibility whatsoever for claims for damages, lost profits, etc., resulting from the use of this device, regardless of item (3) above.